

2023 Holiday Best

QRG
QUALITY-RESOURCE.COM



SL174PR

40 oz Urban Peak® Apex Ridge Vacuum Travel Mug

Stainless Steel, dual-wall, Copper-lined, vacuum-insulated liner. Push-on, flip top lid with snap locking closure and center straw hole (Tritan straw included). Powder-coated finish. 1-year limited warranty. **Lead-free** vacuum seal. XFactor 12X

12	25	50	100	
28.99	27.99	26.99	24.99	4C

* Pricing subject to change. Please confirm with your sales rep

NEW



IMPORTANT NOTE: The pricing reflected in this brochure is intended as a REFERENCE TOOL ONLY. Please refer to your sales rep to confirm pricing, decoration methods, product info and PROP 65 info. | SET-UP: Laser Engraving: \$60.00(G)/location. Silkscreen: \$60.00(G) per color/ location. RUN CHARGES: Silkscreen: 1st std. color/location included. Each add'l color/location \$0.50(G)/piece. Laser Engraving: 1st location included. Each add'l location \$1.20(G)/piece. Personalization: (Laser Engraving only): \$1.00(G) per piece/line.



NEW



SL173PR

30 oz **Urban Peak**® Apex Ridge Vacuum Travel Mug

Stainless Steel, dual-wall, Copper-lined, vacuum-insulated, deep draw liner. Push-on, flip top lid with snap locking closure and center straw hole (Tritan straw included). Powder-coated finish. 1-year limited warranty. **Lead-free** vacuum seal. XFactor **10X**

12	25	50	100
27.49	26.62	25.74	23.99 4C

* Pricing subject to change. Please confirm with your sales rep



NEW



SL179PR

28oz **Urban Peak**® Pinnacle Flip Straw Tumbler

Stainless Steel, dual-wall, Copper-lined, vacuum-insulated liner. Powder-coated finish. 1-year limited warranty. Features a screw-on lid with metal handle and a built-in flip straw. **Lead-free** vacuum seal. XFactor **10X**

24	48	96	244
26.39	25.54	24.69	22.99 4C

* Pricing subject to change. Please confirm with your sales rep



NEW



SL178PR

20oz **Urban Peak**® Pinnacle Flip Straw Tumbler

Stainless Steel, dual-wall, Copper-lined, vacuum-insulated deep draw liner. Powder-coated finish. 1-year limited warranty. Features a screw-on lid with metal handle and a built-in flip straw. **Lead-free** vacuum seal. XFactor **10X**

24	48	96	244
25.19	24.39	23.59	21.99 4C

* Pricing subject to change. Please confirm with your sales rep



SL171PR

NEW

Urban Peak® 40oz Portage Flip Straw Water Bottle

Stainless Steel, dual-wall, Copper-lined, vacuum-insulated liner. Features a twist-off lid with handle and built-in flip straw (2 straws included). Powder-coated finish. 1-year limited warranty. **Lead-free** vacuum seal. XFactor 12X

12	25	50	100
27.49	26.62	25.74	23.99 4C

* Pricing subject to change. Please confirm with your sales rep

IMPORTANT NOTE: The pricing reflected in this brochure is intended as a REFERENCE TOOL ONLY. Please refer to your sales rep to confirm pricing, decoration methods, product info and PROP 65 info. | SET-UP: TruColor/Laser Engraving: \$60.00(G)/location. Silkscreen: \$60.00(G) per color/location. RUN CHARGES: TruColor: \$1.00(G) per piece/location for (full color) std. imprint area. Each add'l square inch beyond std. imprint area \$0.24(G) per piece/location. Silkscreen: 1st std. color/location included. Each add'l color/location \$0.50(G)/piece. Laser Engraving: 1st location included. Each add'l location \$1.20(G)/piece. Personalization: (TruColor & Laser Engraving only): \$1.00(G) per piece/line.



NEW



SL169PR

Urban Peak® 20oz Portage Flip Straw Water Bottle

Stainless Steel, dual-wall, Copper-lined, vacuum-insulated liner. Features a twist-off lid with handle and built-in flip straw (2 straws included). Powder-coated finish. 1-year limited warranty. **Lead-free** vacuum seal. XFactor 10X

24	48	96	244
20.59	19.94	19.29	17.99 4C

* Pricing subject to change. Please confirm with your sales rep



NEW



SL170PR

Urban Peak® 25oz Portage Flip Straw Water Bottle

Stainless Steel, dual-wall, Copper-lined, vacuum-insulated liner. Features a twist-off lid with handle and built-in flip straw (2 straws included). Powder-coated finish. 1-year limited warranty. **Lead-free** vacuum seal. XFactor 10X

24	48	96	244
22.89	22.16	21.44	19.99 4C

* Pricing subject to change. Please confirm with your sales rep

SL168PR

30 oz Urban Peak® Harbor Trail Vacuum Camp Mug

Patent pending. Dual-wall, Copper-lined vacuum-insulated deep draw liner. Powder-coated finish with a Stainless Steel top rim. 1-year limited warranty. Leak-resistant, push-on lid with Tritan™ snap-locking closure. **Lead-free** vacuum seal. XFactor 10X

24	48	96	244
27.69	26.77	25.84	23.99 4C

*Pricing subject to change. Please confirm with your sales rep



IMPORTANT NOTE: The pricing reflected in this brochure is intended as a REFERENCE TOOL ONLY. Please refer to your sales rep to confirm pricing, decoration methods, product info and PROP 65 info. | SET-UP: Laser Engraving: \$60.00(G)/location. Pad Print/Silkscreen: \$60.00(G) per color/ location. RUN CHARGES: Pad Print/Silkscreen: 1st std. color/location included. Each add'l color/location \$0.50(G)/piece. Laser Engraving: 1st location included. Each add'l location \$1.20(G)/piece. Personalization: (Laser Engraving only): \$1.00(G) per piece/line.



SL163PR

20 oz **Urban Peak**® Harbor Trail Vacuum Camp Mug

Patented. Dual-wall, Copper-lined vacuum-insulated deep draw liner. Powder-coated finish with a Stainless Steel top rim. 1-year limited warranty. Spill-proof, push-on lid with Tritan™ snap-locking closure.

Lead-free vacuum seal. XFactor **8X**

24	48	96	244
24.09	23.32	22.54	20.99 4C

* Pricing subject to change. Please confirm with your sales rep



SL162PR

16 oz **Urban Peak**® Stony Trail Vacuum Mug

Patented. Dual-wall, Copper-lined vacuum-insulated deep draw liner. Powder-coated finish. 1-year limited warranty. Includes a smoke color spill-proof, push-on lid with Tritan™ snap-locking closure. **Lead-free** vacuum seal. XFactor **10X**

24	48	96	244
22.89	22.16	21.44	19.99 4C

* Pricing subject to change. Please confirm with your sales rep



SL167PR

NEW

15oz **Urban Peak®** Citrine Vacuum Mug

Stainless Steel, dual-wall, Copper-lined, vacuum-insulated, deep draw liner. Features a clear push-on, sip-through lid. Powder-coated finish. 1-year limited warranty. **Lead-free in all accessible components. XFactor 7X**

24	48	96	244
22.89	22.16	21.44	19.99 4C

*Pricing subject to change. Please confirm with your sales rep

SL167PM

NEW

15oz **Urban Peak®** Alloy Vacuum Mug

Stainless Steel, dual-wall, Copper-lined, vacuum-insulated deep draw liner. Powder-coated finish. 1-year limited warranty. Features a clear push-on, sip-through lid. **Lead-free in all accessible components. XFactor 7X**

24	48	96	244
22.89	22.16	21.44	19.99 4C

*Pricing subject to change. Please confirm with your sales rep



IMPORTANT NOTE: The pricing reflected in this brochure is intended as a REFERENCE TOOL ONLY. Please refer to your sales rep to confirm pricing, decoration methods, product info and PROP 65 info. | SET-UP: Laser Engraving: \$60.00(G)/location. Pad Print/Silkscreen: \$60.00(G) per color/ location. RUN CHARGES: Pad Print/Silkscreen: 1st std. color/location included. Each add'l color/location \$0.50(G)/piece. Laser Engraving: 1st location included. Each add'l location \$1.20(G)/piece. Personalization: (Laser Engraving only): \$1.00(G) per piece/line.



SL259PR



14 oz Urban Peak® Summit Vacuum Camp Mug

Dual-wall, Copper-lined vacuum-insulated deep draw liner. 18-8 Stainless Steel. Powder-coated finish. 1-year limited warranty. Clear push-on, sip-through lid. **Lead-free** vacuum seal. XFactor 7X

24	48	96	244
22.89	22.16	21.44	19.99 4C

* Pricing subject to change. Please confirm with your sales rep



SL258PR



14 oz Urban Peak® Trek Vacuum Camp Mug

Dual-wall, Copper-lined vacuum-insulated deep draw liner. 18-8 Stainless Steel. Powder-coated finish. 1-year limited warranty. Clear push-on, sip-through lid. **Lead-free** vacuum seal. XFactor 7X

24	48	96	244
22.89	22.16	21.44	19.99 4C

* Pricing subject to change. Please confirm with your sales rep



SL261PR



18 oz Urban Peak® Elevate Vacuum Camp Mug

Dual-wall, Copper-lined vacuum-insulated deep draw liner. 18-8 Stainless Steel. Durable powder-coated finish. 1-year limited warranty. Features a clear push-on, sip-through lid. **Lead-free** vacuum seal. XFactor 8X

24	48	96	244
22.89	22.16	21.44	19.99 4C

* Pricing subject to change. Please confirm with your sales rep



SL177PR



24oz Urban Peak® Alpine Vacuum Mug

Stainless Steel, dual-wall, Copper-lined, vacuum-insulated deep draw liner. Powder-coated finish. 1-year limited warranty. Features a clear push-on, thumb-slide lid. **Lead-free** vacuum seal. XFactor 8X

24	48	96	244
25.19	24.39	23.59	21.99 4C

* Pricing subject to change. Please confirm with your sales rep

NEW

SL172PM

15oz Urban Peak® Keystone Metallic Vacuum Tumbler

Stainless Steel, dual-wall, Copper-lined, vacuum-insulated, deep draw liner. Features a clear push-on, sip-through lid. Powder-coated finish. 1-year limited warranty. **Lead-free in all accessible components.. XFactor 6X**

24	48	96	244
20.59	19.94	19.29	17.99 4C

* Pricing subject to change. Please confirm with your sales rep



IMPORTANT NOTE: The pricing reflected in this brochure is intended as a REFERENCE TOOL ONLY. Please refer to your sales rep to confirm pricing, decoration methods, product info and PROP 65 info. | SET-UP: TruColor/Laser Engraving: \$60.00(G)/location. Silkscreen: \$60.00(G) per color/ location. RUN CHARGES: TruColor: \$1.00(G) per piece/location for (full color) std. imprint area. Each add'l square inch beyond std. imprint area \$0.24(G) per piece/location. Silkscreen: 1st std. color/location included. Each add'l color/location \$0.50(G)/piece. Laser Engraving: 1st location included. Each add'l location \$1.20(G)/piece. Personalization: (TruColor & Laser Engraving only): \$1.00(G) per piece/line.



SL175PR

NEW ● ○

12oz Urban Peak® Bondi Vacuum Tumbler

Stainless Steel, dual-wall, Copper-lined, vacuum-insulated, deep draw liner. Powder-coated finish with Silicone grip. 1-year limited warranty. Features a thumb-slide, push-on lid (clear lid on white, smoke lid on black). **Lead-free** vacuum seal. XFactor 6X

24	48	96	244
18.29	17.72	17.14	15.99 4C

* Pricing subject to change. Please confirm with your sales rep



SL176PR

NEW ● ○

16oz Urban Peak® Bondi Vacuum Tumbler

Stainless Steel, dual-wall, Copper-lined, vacuum-insulated, deep draw liner. Powder-coated finish with Silicone grip. 1-year limited warranty. Features a thumb-slide, push-on lid (clear lid on white, smoke lid on black). **Lead-free** vacuum seal. XFactor 8X

24	48	96	244
20.59	19.94	19.29	17.99 4C

* Pricing subject to change. Please confirm with your sales rep



SL263PR

○ ● ● ● ●

15oz Urban Peak® Stout Trail Vacuum Tumbler

Dual-wall, Copper-lined vacuum-insulated deep draw liner. 18-8 Stainless Steel. Durable powder-coated finish. 1-year limited warranty. Features a clear push-on, sip-through lid. **Lead-free** vacuum seal. XFactor 6X

24	48	96	244
17.19	16.64	16.09	14.99 4C

* Pricing subject to change. Please confirm with your sales rep



SL166PR

NEW ○ ● ● ● ●

18oz Urban Peak® Stout Trail Vacuum Mug

Stainless Steel, dual-wall, Copper-lined, vacuum-insulated, deep draw liner. Features a clear push-on, sip-through lid. Powder-coated finish. 1-year limited warranty. **Lead-free** vacuum seal. XFactor 8X

24	48	96	244
22.89	22.16	21.44	19.99 4C

* Pricing subject to change. Please confirm with your sales rep



FrostBuddy.

NEW



FB701

Frost Buddy® To-Go Buddy

Patent Pending. Designed to insulate varying-sized (Small, Medium, Large) retail to-go beverage cups. Stainless Steel, dual-wall, vacuum-insulated liner. Includes 2 lids: to-go beverage collar and a 100% leak-proof tumbler lid (for a 30oz capacity). 1-year limited warranty. Keeps contents cold for 12+ hours, hot for 5+ hours.

12	25	50	100	
45.79	44.34	42.89	39.99	4C

** Pricing subject to change. Please confirm with your sales rep*

IMPORTANT NOTE: The pricing reflected in this brochure is intended as a REFERENCE TOOL ONLY. Please refer to your sales rep to confirm pricing, decoration methods, product info and PROP 65 info. | SET-UP: Laser Engraving: \$60.00(G)/location. Silkscreen: \$60.00(G) per color/ location. RUN CHARGES: Silkscreen: 1st std. color/location included. Each add'l color/location \$0.50(G)/piece. Laser Engraving: 1st location included. Each add'l location \$1.20(G)/piece. Personalization: (Laser Engraving only): \$1.00(G) per piece/line.

FB01 - FB54

Frost Buddy® Universal Buddy 2.0

The world's first universal can cooler! Designed to insulate nearly all 12oz and 16oz cans and bottles. Double wall, vacuum-insulated Stainless Steel. Keeps temperatures cold for 12+ hours. Includes Silicone lid and non-slip bottom. 1-year limited warranty. Patent Pending.

25	50	100	250	
40.19	38.89	37.59	34.99	4C

* Pricing subject to change. Please confirm with your sales rep





SL260PR

Urban Peak® 12 oz Bedrock Trail Vacuum Can Cooler

Transitions between poured drink insulated tumbler, 12 oz can cooler, and 12 oz beer bottle cooler. Dual-wall, vacuum-insulation. 18-8 Stainless Steel. 1-year limited warranty. Includes 2 lids (clear screw-on, sip-through lid and a black can/bottle ring). Lead-free in all accessible components. XFactor 6X.

24	48	96	244
15.99	15.49	14.99	13.99 4C

* Pricing subject to change. Please confirm with your sales rep



SL165PR

20 oz Urban Peak® Party Cup

Patent pending. Dual-wall, Copper-lined vacuum-insulated deep draw liner. 18-8 Stainless Steel. Durable powder-coated finish. 1-year limited warranty. Features a clear push-on, sip-through lid. Lead-free vacuum seal. XFactor 7X.

24	48	96	244
22.89	22.16	21.44	19.99 4C

* Pricing subject to change. Please confirm with your sales rep

IMPORTANT NOTE: The pricing reflected in this brochure is intended as a REFERENCE TOOL ONLY. Please refer to your sales rep to confirm pricing, decoration methods, product info and PROP 65 info. | SET-UP: TruColor/Laser Engraving: \$60.00(G)/location. Pad Print/Silkscreen: \$60.00(G) per color/location. RUN CHARGES: TruColor: \$1.00(G) per piece/location for (full color) std. imprint area. Each add'l square inch beyond std. imprint area \$0.24(G) per piece/location. Pad Print/Silkscreen: 1st std. color/location included. Each add'l color/location \$0.50(G)/piece. Laser Engraving: 1st location included. Each add'l location \$1.20(G)/piece. Personalization: (TruColor & Laser Engraving only): \$1.00(G) per piece/line.



SL238PR



12 oz **Urban Peak®** 3-in-1 Trail Tumbler

Patented. Transitions between a 12 oz insulated tumbler, and a 12 oz can/bottle cooler. Stainless Steel, Dual-wall, Copper-lined vacuum-insulated deep draw liner. Powder-coated finish. Includes 2 lids: spill-proof lid and a black can/bottle ring. 1-year limited warranty. **Lead-free** vacuum seal. XFactor **8X**

24	48	96	244
18.29	17.72	17.14	15.99 4C

* Pricing subject to change. Please confirm with your sales rep



SL233PR



12 oz **Urban Peak®** 3-in-1 Trail Insulator

Patented. Self-contained unit transitions between an insulated tumbler and 12 oz can/bottle cooler. 18-8 Stainless Steel, Dual-wall, Copper-lined, vacuum-insulated deep draw liner. 1-year limited warranty. Includes 2 lids: thumb-slide, screw-on lid and a black can/bottle ring. **Lead-free** vacuum seal. XFactor **6X**

24	48	96	244
18.29	17.72	17.14	15.99 4C

* Pricing subject to change. Please confirm with your sales rep



SL262PR



12 oz **Urban Peak®** 2-in-1 Slim Vacuum Can Tumbler

Patented. Transitions between a tumbler, and a 12 oz slim can cooler. Includes 2 attached lids: a black can cooler ring & a clear thumb-slide, screw-on lid. 18-8 Stainless Steel, Dual-wall, Copper-lined vacuum-insulated deep draw liner. Powder-coated finish. 1-year limited warranty. **Lead-free** vacuum seal. XFactor **7X**

24	48	96	244
19.49	18.87	18.24	16.99 4C

* Pricing subject to change. Please confirm with your sales rep



SL161PR



12 oz **Urban Peak®** 3-in-1 Hassler Vacuum Mug

Patent pending. Transitions between 12 oz tumbler and 12 oz can/bottle cooler. Features 2 lids: clear thumb-slide, push-on lid and a black can/bottle ring. Dual-wall, Copper-lined vacuum-insulated deep draw liner. Durable powder-coated finish. 1-year limited warranty. **Lead-free** vacuum seal. XFactor **7X**

24	48	96	244
22.89	22.16	21.44	19.99 4C

* Pricing subject to change. Please confirm with your sales rep



SL234PR

20 oz **Urban Peak**® Trail Vacuum Tumbler

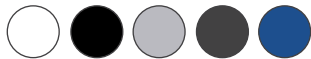
Patented. Dual-wall, Copper-lined vacuum-insulated deep draw liner. Stainless Steel. Powder-coated finish. 1-year limited warranty. Spill-proof lid with Tritan™ snap-locking closure. **Lead-free** vacuum seal. XFactor **8X**

24	48	96	244
19.49	18.87	18.24	16.99 4C

* Pricing subject to change. Please confirm with your sales rep



IMPORTANT NOTE: The pricing reflected in this brochure is intended as a REFERENCE TOOL ONLY. Please refer to your sales rep to confirm pricing, decoration methods, product info and PROP 65 info. | SET-UP: TruColor/Laser Engraving: \$60.00(G)/location. Silkscreen: \$60.00(G) per color/ location. RUN CHARGES: TruColor: \$1.00(G) per piece/location for (full color) std. imprint area. Each add'l square inch beyond std. imprint area \$0.24(G) per piece/location. Silkscreen: 1st std. color/location included. Each add'l color/location \$0.50(G)/piece. Laser Engraving: 1st location included. Each add'l location \$1.20(G)/piece. Personalization: (TruColor & Laser Engraving only): \$1.00(G) per piece/line.



SL235PR

30 oz **Urban Peak®** Trail Vacuum Tumbler

Patented. Dual-wall, Copper-lined vacuum-insulated deep draw liner. Stainless Steel. Powder-coated finish. 1-year limited warranty. Spill-proof lid with Tritan™ snap-locking closure. **Lead-free** vacuum seal. XFactor **10X**

24	48	96	244
22.89	22.16	21.44	19.99 4C

* Pricing subject to change. Please confirm with your sales rep



SL243PR

Urban Peak® 30 oz Altair Vacuum Tumbler

Patented. Dual-wall, Copper-lined vacuum-insulated deep draw liner. 18-8 Stainless Steel. Powder-coated finish (colors). 1-year limited warranty. Spill-proof lid with Tritan™ snap-locking closure. **Lead-free in all accessible components.** XFactor **12X**

24	48	96	244
22.89	22.16	21.44	19.99 4C

* Pricing subject to change. Please confirm with your sales rep

SL351PR

Urban Peak® Canyon Trail 20 oz Vacuum Tumbler

Patented. Dual-wall, vacuum-insulated liner. 18-8 Stainless Steel. Spill-proof lid with Tritan™ snap-locking closure. Powder-coated finish. 1-year limited warranty. **Lead-free** vacuum seal. XFactor **8X**

24	48	96	244
20.59	19.94	19.29	17.99 4C

* Pricing subject to change. Please confirm with your sales rep



IMPORTANT NOTE: The pricing reflected in this brochure is intended as a REFERENCE TOOL ONLY. Please refer to your sales rep to confirm pricing, decoration methods, product info and PROP 65 info. | SET-UP: TruColor/Laser Engraving: \$60.00(G)/location. Silkscreen: \$60.00(G) per color/ location. RIN CHARGES: TruColor: \$1.00(G) per piece/location for (full color) std. imprint area. Each add'l square inch beyond std. imprint area \$0.24(G) per piece/location. Silkscreen: 1st std. color/location included. Each add'l color/location \$0.50(G)/piece. Laser Engraving: 1st location included. Each add'l location \$1.20(G)/piece. Personalization: (TruColor & Laser Engraving only): \$1.00(G) per piece/line.



Available Band Colors



SL164PM

NEW



16 oz Urban Peak® Keystone Trail Metallic Vacuum Tumbler

Patent pending. Dual-wall, Copper-lined vacuum-insulated deep draw liner. 18-8 Stainless Steel. Powder-coated finish with metallic color top and bottom rims. 1-year limited warranty. Spill-proof lid with Tritan™ snap-locking closure. **Lead-free in all accessible components. XFactor 10X**

24	48	96	244
22.89	22.16	21.44	19.99 4C

* Pricing subject to change. Please confirm with your sales rep

PERSONA®

SV95PR



14 oz Persona® Wave Trail Vacuum Tumbler

Patented. Dual-wall, Copper-lined vacuum-insulated deep draw liner. Includes a leak-proof screw-on lid. Powder-coated finish. **Lead-free vacuum seal. XFactor 9X**

24	48	96	244
18.29	17.72	17.14	15.99 4C

* Pricing subject to change. Please confirm with your sales rep

You might also like

SL234SS

SL238SS

SL212PR

SL164PR

SL256PR



20 oz Urban Peak® Vacuum Tumbler
as low as \$16.99 (C)



12 oz Urban Peak® 3-in-1 Tumbler
as low as \$14.99 (C)



16 oz Urban Peak® Caturra Trail Vacuum Tumbler
as low as \$16.99 (C)



16 oz Urban Peak® Keystone Trail Vacuum Tumbler
as low as \$17.99 (C)



Urban Peak® 17 oz Staple Trail Vacuum Tumbler
as low as \$18.99 (C)



SL266PR

Urban Peak® 28 oz Flux Trail Water Bottle

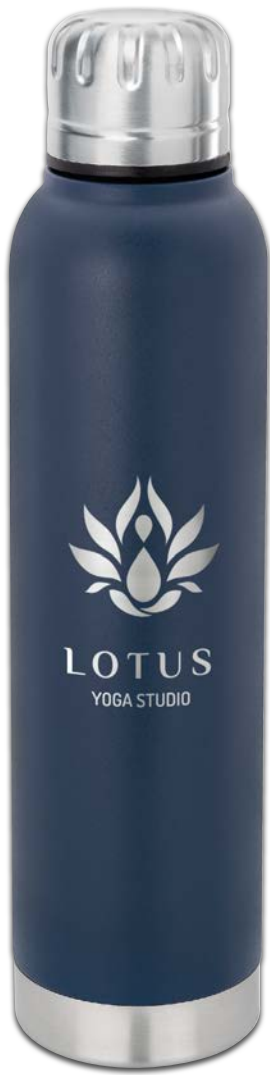
Dual-wall, Copper-lined vacuum-insulated liner. 18-8 Stainless Steel. Durable powder-coated finish. Features a Stainless Steel leak-proof, twist off cap. **Lead-free in all accessible components.** 1-year limited warranty. XFactor 12X

24	48	96	244
19.49	18.87	18.24	16.99 4C

*Pricing subject to change. Please confirm with your sales rep



IMPORTANT NOTE: The pricing reflected in this brochure is intended as a REFERENCE TOOL ONLY. Please refer to your sales rep to confirm pricing, decoration methods, product info and PROP 65 info. | SET-UP: TruColor/Laser Engraving: \$60.00(G)/location. Silkscreen: \$60.00(G) per color/ location. RUN CHARGES: TruColor: \$1.00(G) per piece/location for (full color) std. imprint area. Each add'l square inch beyond std. imprint area \$0.24(G) per piece/location. Silkscreen: 1st std. color/location included. Each add'l color/location \$0.50(G)/piece. Laser Engraving: 1st location included. Each add'l location \$1.20(G)/piece. Personalization: (TruColor & Laser Engraving only): \$1.00(G) per piece/line.



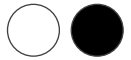
SV101PR

17 oz MOD Trail Vacuum Water Bottle

Dual-wall, Copper-lined vacuum-insulated liner. 18-8 Stainless Steel. Durable powder-coated finish. Features a Stainless Steel leak-proof, twist off cap. **Lead-free in all accessible components.** XFactor 10X

24	48	96	244
17.19	16.64	16.09	14.99 4C

* Pricing subject to change. Please confirm with your sales rep



SL265PR

Urban Peak® 17 oz Flux Trail Water Bottle

Dual-wall, Copper-lined vacuum-insulated liner. 18-8 Stainless Steel. Durable powder-coated finish. Features a Stainless Steel leak-proof, twist off cap. **Lead-free in all accessible components.** 1-year limited warranty. XFactor 12X

24	48	96	244
18.29	17.72	17.14	15.99 4C

* Pricing subject to change. Please confirm with your sales rep

You might also like

SL246PR	SL244SS	FB301	SL248PR	SL257PR
Urban Peak® 64 oz Trail Growler	Urban Peak® 20 oz Water Bottle	Frost Buddy® 24oz Sports Buddy	Urban Peak® Blue Ridge Trail 20 oz Water Bottle	13.5 oz Pace Trail Vacuum Water Bottle
as low as \$29.99 (C)	as low as \$17.99 (C)	as low as \$36.99 (C)	as low as \$19.99 (C)	as low as \$13.99 (C)



UPK26

Urban Peak® Stout Trail Duo Gift Set (SL263PR)

Urban Peak Gift Set includes 2 pieces of the 15 oz Urban Peak Stout Trail Vacuum Tumbler (SL263PR) packaged inside a high quality black gift box with die cut foam. Drinkware is Stainless Steel, double wall Copper-lined vacuum-insulated with powder-coated finish. 1-year limited warranty.

12	25	50	100	
40.19	38.89	37.59	34.99	4C

*Pricing subject to change. Please confirm with your sales rep



IMPORTANT NOTE: The pricing reflected in this brochure is intended as a REFERENCE TOOL ONLY. Please refer to your sales rep to confirm pricing, decoration methods, product info and PROP 65 info. | GIFT SETS: Gift Sets shown include the cost of decoration on a single location on each drinkware piece/cooler for a single TruColor/Laser Engraving Set-up of \$60.00(G) with no additional run charges. All drinkware pieces must have the same decoration method or are subject to add'l set-ups. Inquire for add'l locations. Black gift boxes shown above are sold BLANK. Please inquire for printed pricing.



UPK17



Urban Peak® Trail Gift Set (20oz/3-in-1 Tumbler)

Urban Peak Gift Set includes the 20 oz Trail Tumbler (SL234PR) and 3-in-1 Trail Tumbler (SL238PR) packaged inside a high quality black gift box. Additional colors available. 1-year limited warranty. Drinkware Patented.

12	25	50	100
59.49	57.62	55.74	51.99 4C

* Pricing subject to change. Please confirm with your sales rep



UPK22



Urban Peak® CB161 / SL234PR Gift Set

Urban Peak Gift Set includes the 20 oz Trail Tumbler (SL234PR) packaged inside the Waterproof 12 Can Hinge Cooler (CB161). 1-year limited warranty. Drinkware Patented.

12	25	50	100
57.29	55.47	53.64	49.99 4C

* Pricing subject to change. Please confirm with your sales rep



UPK21PR

Urban Peak® CB165 Trail Gift Set

Urban Peak Gift Set includes the 20 oz Trail Tumbler (SL234PR) and 3-in-1 Trail Insulator (SL233PR) packaged inside the Reserve 6 Can Cooler (CB165). 1-year limited warranty. Drinkware Patented.

9	18	36	72
68.39	66.29	64.19	59.99 4C

* Pricing subject to change. Please confirm with your sales rep



UPK19PR



Urban Peak® CB157 Trail Gift Set

Features the Urban Peak 3-in-1 Trail Insulator (SL233PR), 20 oz Trail Tumbler (SL234PR), 30 oz Trail Tumbler (SL235PR), and the Waterproof 24 Can Hinge Cooler (CB157). 1-year limited warranty. Decoration included on all pieces.

6	12	36	72
112.49	109.37	106.24	99.99 4C

* Pricing subject to change. Please confirm with your sales rep



UPK36

NEW

Urban Peak® CB170 / Blanket Gift Set

Gift set features the Micro-mink Sherpa Blanket (PBF56) paired with the Urban Peak® 30 Can Collapsible Cooler (CB170).
Decoration included on cooler.

6	12	36	72
101.79	98.84	95.89	89.99 4C

* Pricing subject to change. Please confirm with your sales rep



IMPORTANT NOTE: The pricing reflected in this brochure is intended as a REFERENCE TOOL ONLY. Please refer to your sales rep to confirm pricing, decoration methods, product info and PROP 65 info. | GIFT SETS: Gift Sets shown include the cost of decoration on a single location on each drinkware piece/cooler for a single TruColor/Laser Engraving Set-up of \$60.00(G) with no additional run charges. FL 189 shown in UPK39 includes the cost of single location Pad Print decoration. All drinkware pieces must have the same decoration method or are subject to add'l set-ups. Inquire for add'l locations. Blankets shown above are sold BLANK - optional Laser/Embroidery decoration available for additional charge. Please ask sales rep for embroidery availability and pricing.



UPK45 **NEW** cooler color options

Urban Peak® Summer Lounger Picnic Kit

Gift set features the Plaid Picnic Blanket (PB20) paired with the Urban Peak® Waterproof 24 Can Hinge Cooler (CB157). Decoration included on the cooler.

6	12	36	72
70.69	68.52	66.34	61.99 4C

* Pricing subject to change. Please confirm with your sales rep



UPK46 **NEW**

Urban Peak® Keystone Lunch Date Kit

Gift set features 2 pieces of the 16 oz Urban Peak® Keystone Trail Vacuum Tumbler (SL164PR – Patent Pending) and an Urban Peak® Reserve 12 Can Cooler (CB166). Decoration included on all pieces.

6	12	36	72
77.49	75.12	72.74	67.99 4C

* Pricing subject to change. Please confirm with your sales rep



UPK39 **NEW** cooler color options

Urban Peak® CB157 Cozy Camp Gift Set

Gift set features a Clover Style Worklight (FL189), Micro-mink Sherpa Blanket (PBF56), and Urban Peak® Waterproof 24 Can Hinge Cooler (CB157). Decoration included on cooler and worklight.

6	12	36	72
123.79	120.34	116.89	109.99 4C

* Pricing subject to change. Please confirm with your sales rep



UPK02PR cooler color options

Urban Peak® CB151 Trail Gift Set

Urban Peak® Gift Set includes the 3-in-1 Trail Insulator (SL233PR), 20 oz Trail Tumbler (SL234PR) and 30 oz Trail Tumbler (SL235PR) packaged inside of the Waterproof 24 Can Cooler Bag (CB151). 1-year limited warranty. Drinkware Patented.

6	12	36	72
118.19	114.89	111.59	104.99 4C

* Pricing subject to change. Please confirm with your sales rep



Durable, collapsible can cooler is designed to transition from cube shaped to flat for economical shipping and storage.



NEW

CB168

Urban Peak® 12 Can Collapsible Cooler

This durable, collapsible 12 can cooler is designed to transition easily from a cube shape to a flat piece for economical shipping and storage. Features waterproof Tarpaulin exterior, thick 8mm foam insulation and a leak-resistant heat-sealed liner. 1-year limited warranty.

12	25	50	100
34.39	33.29	32.19	29.99

* Pricing subject to change. Please confirm with your sales rep



NEW

CB169

Urban Peak® 20 Can Collapsible Cooler

This durable, collapsible 20 can cooler is designed to transition easily from a cube shape to a flat piece for economical shipping and storage. Features waterproof Tarpaulin exterior, thick 10mm foam insulation and a leak-resistant heat-sealed liner. 1-year limited warranty.

12	25	50	100
45.89	44.42	42.94	39.99

* Pricing subject to change. Please confirm with your sales rep

NEW

CB170

Urban Peak® 30 Can Collapsible Cooler

This durable, collapsible 30 can cooler is designed to transition easily from a cube shape to a flat piece for economical shipping and storage. Features waterproof Tarpaulin exterior, thick 10mm foam insulation and a leak-resistant heat-sealed liner. 1-year limited warranty.

12	25	50	100
54.99	53.24	51.49	47.99

* Pricing subject to change. Please confirm with your sales rep

IMPORTANT NOTE: The pricing reflected in this brochure is intended as a REFERENCE TOOL ONLY. Please refer to your sales rep to confirm pricing, decoration methods, product info and PROP 65 info. | SET-UP: TruColor: \$60.00(G)/location. RUN CHARGES: TruColor: 1 location (full color) std. imprint area included. Each add'l location: \$0.50(G)/piece. Each add'l square inch beyond std. area \$0.24(G) per piece/location. Personalization: (TruColor): \$1.00(G) per piece/line. Embroidery: Please ask sales rep for embroidery availability and pricing.



CB164

Urban Peak® Slate 36 Can Waterproof Cooler

The Urban Peak Cooler Collection is known for its extra-thick insulation. Durable waterproof, top-loading 36 can cooler bag. Includes an adjustable padded shoulder strap and hook and loop padded handles. 1-year limited warranty.

6	12	36	72
84.89	82.42	79.94	74.99 4C

* Pricing subject to change. Please confirm with your sales rep



CB175

NEW ●●○

Urban Peak® Waterproof Ashforth 38 Can Tote/Cooler

Features rolled/folded closed and secured with 2 adjustable buckle straps. Constructed from waterproof Tarpaulin with a heat-sealed, leak-resistant liner. Includes an adjustable, padded shoulder strap, padded handles with hook and loop closure, and an attached Stainless Steel bottle opener. 1-year limited warranty.

6	12	36	72
62.69	60.77	58.84	54.99 4C

* Pricing subject to change. Please confirm with your sales rep



CB181

NEW ○●●

Urban Peak® Waterproof Ridgetop 36 Can Cooler

Constructed from waterproof Tarpaulin with a heat-sealed, leak-resistant liner. Features a hinge-style zippered top and hook and loop quick-access top panel. Includes an adjustable padded shoulder strap, padded handles with hook and loop closure, and an attached Stainless Steel bottle opener. 1-year limited warranty.

6	12	36	72
62.69	60.77	58.84	54.99 4C

* Pricing subject to change. Please confirm with your sales rep



CB178

NEW

Urban Peak® Waterproof Ballard 30 Can Cooler

Constructed of waterproof Tarpaulin and a heat-sealed, leak-resistant liner. Includes wide opening for quick access, an adjustable, padded shoulder strap, padded handles with hook and loop closure, and an attached Stainless Steel bottle opener. 1-year limited warranty.

6	12	36	72
57.29	55.47	53.64	49.99 4C

* Pricing subject to change. Please confirm with your sales rep



CB157

Urban Peak® Waterproof 24 Can Hinge Cooler

The Urban Peak Cooler Collection is known for its extra-thick insulation. Constructed from waterproof Tarpaulin with a heat-sealed, leak-resistant liner. Features an adjustable, padded shoulder strap, reinforced handles, and an attached Stainless Steel bottle opener. 1-year limited warranty.

12	25	50	100
50.39	48.79	47.19	43.99 4C

* Pricing subject to change. Please confirm with your sales rep



IMPORTANT NOTE: The pricing reflected in this brochure is intended as a REFERENCE TOOL ONLY. Please refer to your sales rep to confirm pricing, decoration methods, product info and PROP 65 info. | SET-UP: TruColor: \$60.00(G)/location. RUN CHARGES: TruColor: 1 location (full color) std. imprint area included. Each add'l location: \$0.50(G)/piece. Each add'l square inch beyond std. area \$0.24(G) per piece/location. Personalization: (TruColor): \$1.00(G) per piece/line.



CB154

Urban Peak® 24 Can Cooler

The Urban Peak Cooler Collection is known for its extra-thick insulation. Constructed from 1680D Polyester with a heat-sealed, leak-resistant liner. Features an adjustable, padded shoulder strap, reinforced handles, and an attached Stainless Steel bottle opener. 1-year limited warranty.

12	25	50	100	
45.89	44.42	42.94	39.99	4C

* Pricing subject to change. Please confirm with your sales rep



CB174

NEW

Urban Peak® Waterproof 24 Can Hinge Asher Cooler

Constructed from waterproof Tarpaulin with a heat-sealed, leak-resistant liner. Hinge-style zippered top allows for quick accessibility. Includes an adjustable, padded shoulder strap, reinforced top and side handles, and an attached Stainless Steel bottle opener. 1-year limited warranty.

12	25	50	100	
50.39	48.79	47.19	43.99	4C

* Pricing subject to change. Please confirm with your sales rep



CB167

Urban Peak® Reserve 24 Can Cooler

The Urban Peak Cooler Collection is known for its extra-thick insulation. Constructed from waterproof 500D Tarpaulin. Features a leak-resistant, heat sealed liner, Stainless Steel bottle opener, handles with a hook and loop closure, and an adjustable, padded shoulder strap. 1-year limited warranty.

12	25	50	100	
44.69	43.26	41.84	38.99	4C

* Pricing subject to change. Please confirm with your sales rep



CB180

NEW

Urban Peak® Waterproof Ridgetop 24 Can Cooler

Constructed from waterproof Tarpaulin with a heat-sealed, leak-resistant liner. Features a hinge-style zippered top and a hook and loop quick-access top panel. Includes an adjustable padded shoulder strap, padded handles with hook and loop closure, and an attached Stainless Steel bottle opener. 1-year limited warranty.

6	12	36	72	
57.29	55.47	53.64	49.99	4C

* Pricing subject to change. Please confirm with your sales rep

CB161

Urban Peak® Waterproof 12 Can Hinge Cooler

The Urban Peak Cooler Collection is known for its extra-thick insulation. Constructed from waterproof Tarpaulin with a heat-sealed, leak-resistant liner. Features an adjustable shoulder strap & Stainless Steel bottle opener. 1-year limited warranty.



12	25	50	100	
34.39	33.29	32.19	29.99	4C

* Pricing subject to change. Please confirm with your sales rep



IMPORTANT NOTE: The pricing reflected in this brochure is intended as a REFERENCE TOOL ONLY. Please refer to your sales rep to confirm pricing, decoration methods, product info and PROP 65 info. | SET-UP: TruColor: \$60.00(G)/location. RUN CHARGES: TruColor: 1 location (full color) std. imprint area included. Each add'l location: \$0.50(G)/piece. Each add'l square inch beyond std. area \$0.24(G) per piece/location. Personalization: (TruColor): \$1.00(G) per piece/line.



CB173

Urban Peak® Waterproof 12 Can Hinge Asher Cooler

NEW

The Urban Peak Cooler Collection is known for its extra-thick insulation. Constructed from waterproof Tarpaulin with a heat-sealed, leak-resistant liner. Includes an adjustable shoulder strap, durable top and side handles, and an attached Stainless Steel bottle opener. 1-year limited warranty.

12	25	50	100	
34.39	33.29	32.19	29.99	4C

* Pricing subject to change. Please confirm with your sales rep



CB177

Urban Peak® Waterproof Ballard 12 Can Cooler

NEW

The Urban Peak Cooler Collection is known for its extra-thick insulation. Constructed from waterproof Tarpaulin with a heat-sealed, leak-resistant liner. Includes an adjustable shoulder strap, durable top and side handles, and an attached Stainless Steel bottle opener. 1-year limited warranty.

12	25	50	100	
38.99	37.74	36.49	33.99	4C

* Pricing subject to change. Please confirm with your sales rep



CB165

Urban Peak® Reserve 6 Can Cooler

The Urban Peak Cooler Collection is known for its extra-thick insulation. Constructed from waterproof 500D Tarpaulin. Features a leak-resistant, heat sealed liner and an adjustable shoulder strap. 1-year limited warranty.

18	36	72	144	
25.19	24.39	23.59	21.99	4C

* Pricing subject to change. Please confirm with your sales rep



CB176

Urban Peak® Waterproof Roxhill 12 Can Cooler

NEW

The Urban Peak Cooler Collection is known for its extra-thick insulation. Constructed from waterproof Tarpaulin with a heat-sealed, leak-resistant liner. Includes an adjustable, padded shoulder strap, 2 pockets, and padded handles with hook and loop closure. 1-year limited warranty.

12	25	50	100	
34.39	33.29	32.19	29.99	4C

* Pricing subject to change. Please confirm with your sales rep



CB166

Urban Peak® Reserve 12 Can Cooler

The Urban Peak Cooler Collection is known for its extra-thick insulation. Constructed from waterproof 500D Tarpaulin. Features a leak-resistant, heat sealed liner, Stainless Steel bottle opener, and an adjustable shoulder strap. 1-year limited warranty.

18	36	72	144
33.19	32.14	31.09	28.99 4C

* Pricing subject to change. Please confirm with your sales rep



CB179

Urban Peak® Waterproof Ridgetop 12 Can Cooler

NEW

The Urban Peak Cooler Collection is known for its extra-thick insulation. Constructed from waterproof Tarpaulin with a heat-sealed, leak-resistant liner. Hinge-style zippered top allows for quick accessibility. Includes an adjustable shoulder strap, 3 outer pockets, and an attached Stainless Steel bottle opener. 1-year limited warranty.

12	25	50	100
36.69	35.52	34.34	31.99 4C

* Pricing subject to change. Please confirm with your sales rep



CB147

Metropolitan 12 Can Cooler Bag

Constructed from 300D and 210D Polyester. Features include a side mesh pocket, a webbed carry handle and an adjustable shoulder strap.

24	48	96	244
17.19	16.64	16.09	14.99 4C

* Pricing subject to change. Please confirm with your sales rep



CB41

Infinity 12 Can Sport Cooler

Features include foam insulation, heat-sealed liner, zippered side pocket and an adjustable/removable shoulder strap. Constructed from 420D Polyester and 600D Polyester.

24	48	96	244
21.79	21.09	20.39	18.99 4C

* Pricing subject to change. Please confirm with your sales rep

IMPORTANT NOTE: The pricing reflected in this brochure is intended as a REFERENCE TOOL ONLY. Please refer to your sales rep to confirm pricing, decoration methods, product info and PROP 65 info. | SET-UP: TruColor: \$60.00(G)/location. RUN CHARGES: TruColor: 1 location (full color) std. imprint area included. Each add'l location: \$0.50(G)/piece. Each add'l square inch beyond std. area \$0.24(G) per piece/location. Personalization: (TruColor): \$1.00(G) per piece/line. Embroidery: Please ask sales rep for embroidery availability and pricing.



NEW ● ●



CB171

Urban Peak® 35 Can Fold Top Backpack Cooler

Constructed from 55C PVC Mesh Tarpaulin with 10mm foam insulation. Features include a zippered, fold-over double buckle closure, leak-resistant heat-sealed liner, Stainless Steel bottle opener, carabiner, and adjustable padded shoulder straps. 1-year limited warranty.

12	25	50	100
62.69	60.76	58.84	54.99 4C

* Pricing subject to change. Please confirm with your sales rep

NEW



CB172

Urban Peak® 24 Can Roll Top Backpack Cooler

Constructed from 55C PVC Mesh Tarpaulin with 210D/PU insulation. Features include a zippered, roll-down adjustable closure, leak-resistant heat-sealed liner, mesh side pockets, and adjustable padded shoulder straps. 1-year limited warranty.

12	25	50	100
41.29	39.96	38.64	35.99 4C

* Pricing subject to change. Please confirm with your sales rep



BG349

Urban Peak® 46L Waterproof Backpack/Duffel Bag

Constructed from waterproof 500D Tarpaulin. Features 2 adjustable mesh shoulder straps for use as a backpack. Connect the shoulder straps together with the hook and loop padded handle for use as a duffel bag. Includes 2 compression straps, high quality zipper pulls and ID card holder.

12	25	50	100	
41.29	39.97	38.64	35.99	4C

* Pricing subject to change. Please confirm with your sales rep



IMPORTANT NOTE: The pricing reflected in this brochure is intended as a REFERENCE TOOL ONLY. Please refer to your sales rep to confirm pricing, decoration methods, product info and PROP 65 info. | SET-UP: TruColor: \$60.00(G)/location. Silkscreen: \$60.00(G) color/location. RUN CHARGES: TruColor: 1 location (full color) std. imprint area included. Each add'l location: \$0.50(G)/piece. Each add'l square inch beyond std. area \$0.24(G) per piece/location. Silkscreen: 1st std. color/location included. Each add'l color/location \$0.50(G)/piece. Personalization: (TruColor): \$1.00(G) per piece/line.



BG375

Urban Peak® 41L Waterproof Westlake Duffel

NEW

Constructed of waterproof Tarpaulin with water-resistant zippers. The main zipper extends down over the sides for generous main compartment access. Includes handles with padded hook and loop closure, and 2 side mesh pockets. The adjustable handles also extend into an over-the-shoulder strap. 1-year limited warranty.

12	25	50	100	
36.69	35.52	34.34	31.99	4C

* Pricing subject to change. Please confirm with your sales rep



BG347

Urban Peak® 30L Dry Bag Backpack



Taped waterproof seams and roll top closure to ensure a waterproof seal. Constructed from 210T Grid Cloth with PVC backing. The clear, water-resistant front zip pocket provides easy touch-screen accessibility for electronic devices (device shown not included).

18	36	72	144	
30.99	29.99	28.99	26.99	4C

* Pricing subject to change. Please confirm with your sales rep



BG345

Urban Peak® 10L Dry Bag



Taped waterproof seams and roll top closure to ensure a waterproof seal. Constructed from 190T Polyester with PVC backing. Carabiner clip for convenient transport.

36	72	144	250	
13.69	13.26	12.84	11.99	4C

* Pricing subject to change. Please confirm with your sales rep



BG370

Urban Peak® Crossbody Belt Bag / Fanny Pack

NEW

Sleek, water-resistant belt bag can be worn as a crossbody or a waist pack. Constructed from durable Tarpaulin and features reflective trim, and side webbing for clip attachment. Belt is adjustable up to 53 inches. 1-year limited warranty.

24	48	96	244	
15.99	15.49	14.99	13.99	4C

* Pricing subject to change. Please confirm with your sales rep



21

23

25

27

29

31

22

24

26

28

30

32

BG374

NEW

Delridge 37L Carry-on Computer Travel Backpack

The Delridge is designed for luxury travel. Features include a 17" laptop pocket, lockable zipper heads for extra security, a rear luggage strap, compression straps, a separate shoe compartment, a rubberized padded back, and adjustable air mesh shoulder straps.

6	12	36	72	
78.09	75.82	73.54	68.99	4C

*Pricing subject to change. Please confirm with your sales rep



BG376

NEW

Urban Peak® 47L Waterproof Lakemont Duffel

Constructed from waterproof Tarpaulin. Features include a separate shoe compartment with air vent, and a PEVA lined pocket for wet items. Also includes an adjustable padded shoulder strap, 2 side handles, and padded main handles with hook and loop closure. 1-year limited warranty.

12	25	50	100
52.69	51.02	49.34	45.99 4C

* Pricing subject to change. Please confirm with your sales rep



BG369

NEW

Urban Peak® 56L Slate/Duffel Backpack 2.0

Multi-purpose padded shoulder straps allow user to convert the bag from a duffel to a backpack. Constructed from matte 55C PVC Mesh Tarpaulin. Includes an optional cross-body duffel bag strap. Additional features include water resistant zippers, front and back daisy chains, and side handles. 1-year limited warranty.

12	25	50	100
52.69	51.02	49.34	45.99 4C

* Pricing subject to change. Please confirm with your sales rep



BG371

NEW

Urban Peak® Harmon Ridge Laptop Backpack

Constructed from waterproof Tarpaulin and water-resistant zippers. Features include a 15" laptop pocket, a tablet pocket, two internal water bottle side pockets, two adjustable/removable front compression/carry straps, a padded back panel, adjustable air mesh shoulder straps. 1-year limited warranty.

6	12	36	72	
79.19	76.89	74.59	69.99	4C

* Pricing subject to change. Please confirm with your sales rep



IMPORTANT NOTE: The pricing reflected in this brochure is intended as a REFERENCE TOOL ONLY. Please refer to your sales rep to confirm pricing, decoration methods, product info and PROP 65 info. | SET-UP: TruColor: \$60.00(G)/location. RUN CHARGES: TruColor: 1 location (full color) std. imprint area included. Each add'l location: \$0.50(G)/piece. Each add'l square inch beyond std. area \$0.24(G) per piece/location. Personalization: (TruColor): \$1.00(G) per piece/line. Embroidery: Please ask sales rep for embroidery availability and pricing.



BG359

Urban Peak® Water Resistant Computer Backpack

Main compartment features padded slash pockets (designed to secure a 17" laptop), tablet pocket and simple organizer. Front top zippered compartment features 2 neoprene pockets and key clip. Built-in USB 2.0 charging port and battery pack compartment. Constructed of 300D water-repellent Polyester with PU backing and 55C matte PVC Leather bottom. Includes luggage strap, front easy-access zippered pocket and water-resistant zippers.

9	18	36	72
56.09	54.32	52.54	48.99 4C

* Pricing subject to change. Please confirm with your sales rep



BG373

Urban Peak® Travel Computer Backpack w/ Dry Pocket

This sleek, multi-function backpack features both a pocket for a 15" laptop, and a separate dry pocket with magnetic closure (to keep items dry, or to store gym clothes, swimsuits, etc.). It also includes a waterproof padded bottom, padded back panel with adjustable mesh shoulder straps, and a luggage handle.

6	12	36	72
61.79	59.84	57.89	53.99 4C

* Pricing subject to change. Please confirm with your sales rep

NEW



EL161

10W Waterproof 360 Degree Bluetooth® Speaker

Indoor/outdoor IPX7 waterproof 10 watt Bluetooth® speaker. Powerful 360 degree sound. Built-in mic for hands-free calls. Includes USB/Micro charging cable and 3.5 mm audio cable.

6	12	36	72
70.69	68.52	66.34	61.99 4C

* Pricing subject to change. Please confirm with your sales rep



EL198

20W Solar IPX7 Bluetooth® Speaker/Power Bank

Rugged IPX7 waterproof 20 watt Bluetooth® speaker (2 x 10 watt) and 5,000 mAh capacity power bank. Recharge via micro USB cable or monocrystalline silicon 5V/220mA solar panel. Features TF card slot and built-in mic for hands-free calls. Includes micro USB charging cable, 3.5 mm audio cable and loop lanyard.

4	12	36	72
123.69	120.26	116.84	109.99 4C

* Pricing subject to change. Please confirm with your sales rep



EL158

9W Solar Waterproof Bluetooth® Speaker/Power Bank

Indoor/outdoor IPX5 speaker (2 x 4.5 watt) and 4,400 mAh capacity power bank. Recharge via micro USB cable or solar panel. Features powerful subwoofer and built-in mic for hands-free calls. Includes USB/Micro charging cable, 3.5 mm audio cable, mini carabiner and hook and loop straps.

6	12	36	72
90.39	87.79	85.19	79.99 4C

* Pricing subject to change. Please confirm with your sales rep



EBY07

Biconic™ Rugged Waterproof Wireless Speaker

Rugged IP67 rated 10 watt Bluetooth® speaker (2 x 5 watt). Features FM radio function, media shortcut keys, and built-in mic/hands-free controls. Approx 20 hours of playtime and up to 5-hour recharge time. Includes USB-micro USB charging cable and 3.5 mm AUX cable.

6	12	36	72
99.49	96.62	93.74	87.99 4C

* Pricing subject to change. Please confirm with your sales rep



EL175

RoxBox™ 15W IPX7 Bluetooth® 360 Speaker

Indoor/outdoor IPX7 waterproof 15 watt Bluetooth® RoxBox™ speaker with wireless charging base. Powerful 360 degree sound. Built-in mic for hands-free calls. Includes charging dock, Micro/USB charging cable and 3.5 mm audio cable.

4	12	36	72
84.89	82.42	79.94	74.99 4C

* Pricing subject to change. Please confirm with your sales rep



EL79



RoxBox™ Cyclone Bluetooth® Speaker

Rugged Bluetooth® speaker produces exceptional sound quality. IPX5 water resistant rating with carabiner makes it ideal for outdoor activities. Aux-in and built-in mic for hands-free calling.

9	18	36	72
42.39	41.04	39.69	36.99 4C

* Pricing subject to change. Please confirm with your sales rep



EL73



RoxBox™ Duet Bluetooth® Speaker

Bluetooth® speaker with built-in subwoofer provides exceptional quality sound. Aux-in and built-in mic for hands free calling. Full bleed print coverage (available for an add'l charge).

9	18	36	72
48.09	46.56	45.04	41.99 4C

* Pricing subject to change. Please confirm with your sales rep



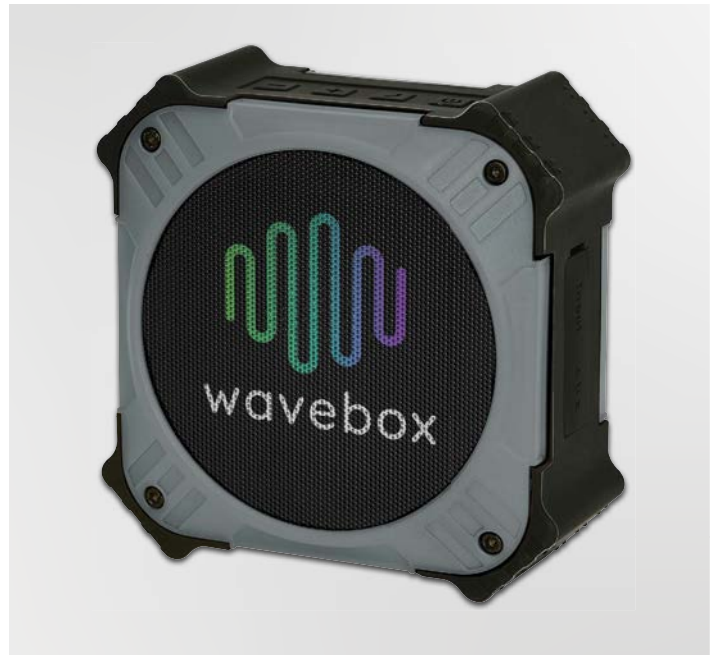
EL179

10W Ikon Waterproof Bluetooth® 360 Degree Speaker

Indoor/outdoor waterproof 10 watt Bluetooth® speaker. Features a TF card slot. Aux-in and built-in mic for hands-free calling. IPX7 waterproof rating.

6	12	36	72
57.29	55.46	53.64	49.99 4C

* Pricing subject to change. Please confirm with your sales rep



EL157



5W Solar Waterproof Bluetooth® Speaker

Rugged 5 watt Bluetooth® speaker that is rechargeable via micro USB cable or high efficiency monocrystalline solar panel. IPX6 waterproof rating and M8 screw hole for bike mount (bike mount not included). Green solar charging indicator light. Built-in mic for hands-free calls.

12	25	50	100
51.49	49.86	48.24	44.99 4C

* Pricing subject to change. Please confirm with your sales rep

IMPORTANT NOTE: The pricing reflected in this brochure is intended as a REFERENCE TOOL ONLY. Please refer to your sales rep to confirm pricing, decoration methods, product info and PROP 65 info. | SET-UP: TruColor/Laser Engraving: \$60.00(G)/location. Pad Print: \$60.00(G) color/location. RUN CHARGES: TruColor: 1 location (full color) std. imprint area included. Each add'l location: \$0.50(G)/piece. Each add'l square inch beyond std. area \$0.24(G) per piece/location. Pad Print: 1st std. color/location included. Each add'l color/location \$0.50(G)/piece. Laser Engraving: 1st location included. Each add'l location \$1.20(G)/piece.

PERSONA®



Persona® Bluetooth® Speaker

3 watt Bluetooth® speaker. Mini/USB cable acts as the antenna for the built-in FM radio. Micro SD card slot. Choose from 13 Persona® color bands.

18	36	72	144
24.09	23.32	22.54	20.99 4C

* Pricing subject to change. Please confirm with your sales rep



EL148

Palette Bluetooth® Speaker

3 watt Bluetooth® speaker. Rubber-coated exterior with a built-in kickstand. TF card holder.

36	72	144	250
14.79	14.34	13.89	12.99 4C

* Pricing subject to change. Please confirm with your sales rep



EL207

5W Assure Speaker with Wireless Charger

5 watt wireless speaker with 10 watt wireless charging surface. Approx up to 8 hours of playtime. Non-slip Silicone accents on top and bottom. TWS capable when two units are paired. Includes USB-C charging cable. *Device shown not included.*

12	25	50	100
52.69	51.02	49.34	45.99 4C

* Pricing subject to change. Please confirm with your sales rep



EL149

Hampton Bluetooth® Speaker

3 watt Bluetooth® speaker. Features Micro SD, FM Scan Radio, Aux-in and built-in mic for hands-free calling.

24	48	96	244
20.59	19.94	19.29	17.99 4C

* Pricing subject to change. Please confirm with your sales rep

EL176

Atune Bluetooth® Earbuds with Charger Case

Bluetooth® wireless earbuds housed in a 350 mAh recharger case. Plays music (stereo) and hands-free calls (stereo). Blue and red indicator lights reflect the charger case and earbud power levels. Auto shut-off after 5 standby minutes. Includes micro USB charging cable.

18	36	72	144
25.19	24.39	23.59	21.99 4C

* Pricing subject to change. Please confirm with your sales rep



IMPORTANT NOTE: The pricing reflected in this brochure is intended as a REFERENCE TOOL ONLY. Please refer to your sales rep to confirm pricing, decoration methods, product info and PROP 65 info. | SET-UP: TruColor/Laser Engraving: \$60.00(G)/location. Pad Print: \$60.00(G) color/location. RUN CHARGES: TruColor: 1 location (full color) std. imprint area included. Each add'l location: \$0.50(G)/piece. Each add'l square inch beyond std. area \$0.24(G) per piece/location. Pad Print: 1st std. color/location included. Each add'l color/location \$0.50(G)/piece. Laser Engraving: 1st location included. Each add'l location \$1.20(G)/piece.

You might also like

EBY08

EL203

ILV30

IH01

IH02



Bytech® True Wireless Earbuds
as low as \$16.99 (C)



Symmetry TWS Wireless Earbuds
and Charger Case
as low as \$25.99 (C)



iLuv® Wireless Button-Free
Earbuds & Charger Case
as low as \$45.99 (C)



iHome® AX-38 True Wireless
Earbuds & Charger Case
as low as \$65.99 (C)



iHome® TX-56 Wireless
Headphones
as low as \$68.99 (C)



EL190

Forte TWS Wireless Earbuds and Charger Case

Wireless earbuds housed in a 300 mAh recharger case with magnetic latch. Plays music (stereo) and hands-free calls (stereo). Red, blue, and green indicator lights reflect the power levels and recharge status. Includes Micro USB charging cable. Connects via V 5.0.

18	36	72	144	
24.59	23.82	23.04	21.49	4C

* Pricing subject to change. Please confirm with your sales rep



EL193

Swivel TWS Wireless Earbuds and Charger Case

Wireless earbuds housed in a 400 mAh recharger case with a sleek, swivel lid. Plays music (stereo) and hands-free calls (stereo). Blue and red indicator lights reflect the charger case and earbud power levels. Includes micro USB charging cable.

18	36	72	144	
26.39	25.54	24.69	22.99	4C

* Pricing subject to change. Please confirm with your sales rep



EL164

Boompods™ Bluetooth® Noise Canceling Headpods Pro

Features active noise cancellation technology that reduces ambient noise and amplifies music. Listen for up to 8 hours on a single 2 hour charge. Built-in mic/remote button. Includes a micro USB charging cable and zippered carrying case. Connects via Bluetooth® V5.0.

4	12	36	72	
113.09	109.82	106.54	99.99	4C

* Pricing subject to change. Please confirm with your sales rep



EL204

Cherry Wood TWS Wireless Earbuds and Charger Case

Real wood grain accents on wireless earbuds housed in a 240 mAh recharger case. Plays music (stereo), and hands-free calls (stereo). Red & white indicator lights reflect charging status. Includes Type-C charging cable and 3 size ear tips. Connects via V 5.0.

9	18	36	72	
61.79	59.84	57.89	53.99	4C

* Pricing subject to change. Please confirm with your sales rep



EL208

Magnetic Wireless Charger & Power Bank - 10000 mAh

Recharge wirelessly or with any of the 3 built-in charging cables: Type-C, lightning, and micro-USB. 10,000 mAh power bank capacity with a wireless charging magnetic surface and a digital power level display. Constructed of ABS black Plastic shell. Includes 4th built-in USB charging cable (USB power adapter not included).

12	25	50	100	
49.19	47.64	46.09	42.99	4C

* Pricing subject to change. Please confirm with your sales rep

NEW



IMPORTANT NOTE: The pricing reflected in this brochure is intended as a REFERENCE TOOL ONLY. Please refer to your sales rep to confirm pricing, decoration methods, product info and PROP 65 info. | SET-UP: TruColor/Laser Engraving: \$60.00(G)/location. RUN CHARGES: TruColor: 1 location (full color) std. imprint area included. Each add'l location: \$0.50(G)/piece. Each add'l square inch beyond std. area \$0.24(G) per piece/location. Laser Engraving: 1st location included. Each add'l location \$1.20(G)/piece.



EL189

Octo Grip Wireless Charger & Power Bank - 10000 mAh

Recharge wirelessly or with a USB cable. Design includes 16 suction cups to hold your device in place while charging. Dual USB ports allow two devices to charge simultaneously. Features LED charging indicator lights: Blue for battery levels; Red for wireless charging.

12	25	50	100	
34.39	33.29	32.19	29.99	4C

* Pricing subject to change. Please confirm with your sales rep

EL174

UL Certified Channel Power Bank - 8000 mAh

UL Certified. 8,000 mAh grade A battery. Laser engraved logo lights up while charging. Includes a power button and charging indicator lights. Made from black ABS plastic shell with a gray fabric accent.

12	25	50	100	
40.19	38.89	37.59	34.99	4C

* Pricing subject to change. Please confirm with your sales rep

You might also like

EL185

EBY03

EL188

EL170

EL195



UL Cert O Ring Wireless / Power Bank - 5000 mAh
as low as \$23.99 (C)

Bytech® Universal Dual Power Bank - 10000 mAh
as low as \$29.99 (C)

UL Cert Tri-Way Wireless & Power Bank - 10000 mAh
as low as \$39.99 (C)

UL Certified Qi Ring Wireless Charger & Power Bank - 10000 mAh
as low as \$47.99 (C)

UL Certified PD Wireless Charger & Power Bank - 10000 mAh
as low as \$52.99 (C)



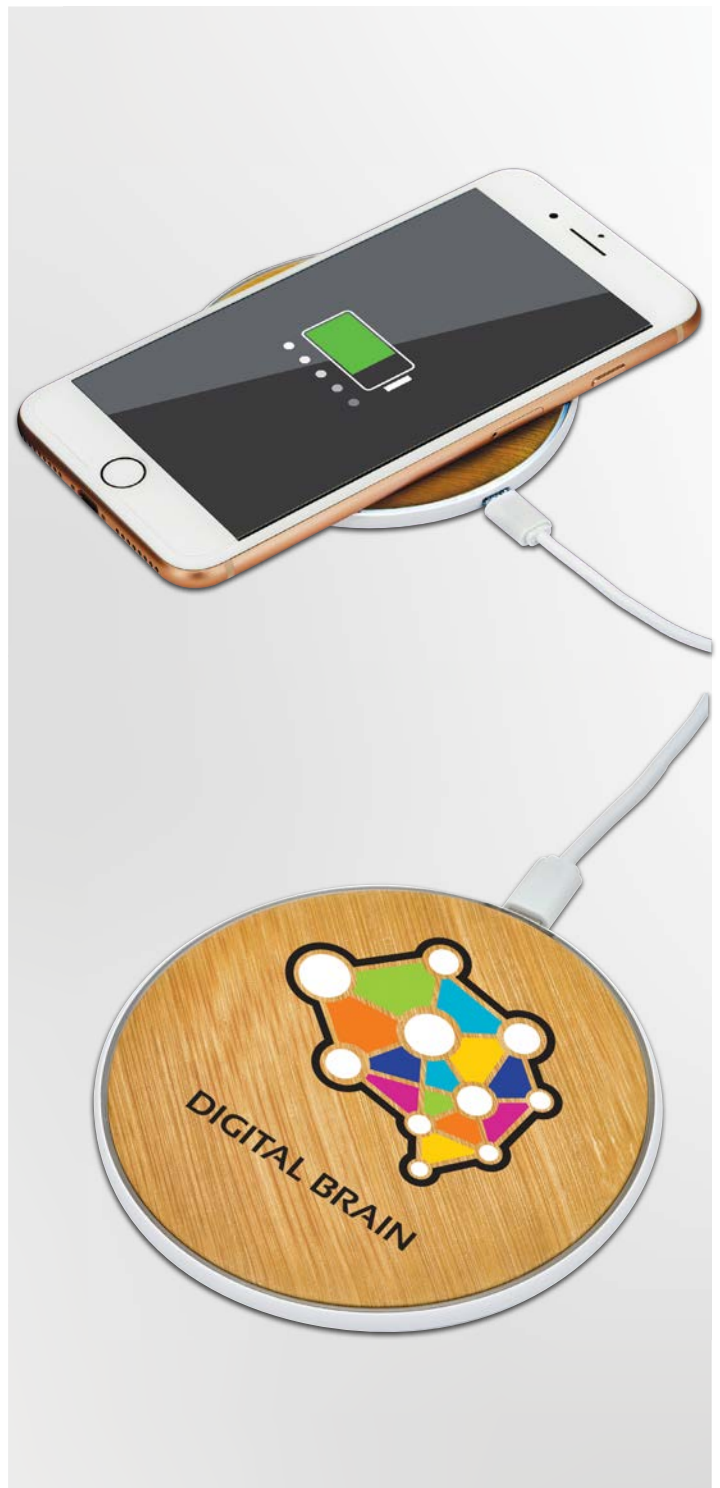
EL183

5W Bamboo Desktop Wireless Charger

Recharge wirelessly or with a USB cable. Thin, lightweight wireless charger pad with built-in device stand/writing instrument/stylus holder. Made of ABS plastic with Bamboo surface and non-slip feet. White LED charging indicator. Includes USB Type-C charging cable.

24	48	96	244
24.09	23.32	22.54	20.99 4C

* Pricing subject to change. Please confirm with your sales rep



EL167

Bamboo Print Wireless Charger

Thin and lightweight wireless charging pad made of ABS white plastic with a bamboo print surface and non-slip feet. Features charging indicator light ring. Includes micro USB charging cable (USB power adapter not included).

24	48	96	244
20.59	19.94	19.29	17.99 4C

* Pricing subject to change. Please confirm with your sales rep



EL197

10W Wireless Charger Pad and Phone Stand

Thin, lightweight wireless charger pad with detachable stand/holder. Recharge devices upright or flat. Made of ABS plastic with non-slip pads and cable channel. LED charging indicator. Includes micro USB charging cable.

24	48	96	244
19.49	18.87	18.24	16.99 4C

* Pricing subject to change. Please confirm with your sales rep



EL163

Oasis Wireless Charger

Thin and lightweight wireless charging pad made of ABS white plastic. Features non-slip ring and charging indicator light. Includes micro USB charging cable (USB power adapter not included).

48	96	192	384
13.69	13.27	12.84	11.99 4C

* Pricing subject to change. Please confirm with your sales rep

You might also like

EL144

EL182

EL192

EBY06

EL207



Flip Stand Power Bank - 4000 mAh

as low as \$15.99 (C)

5W Duality Wireless Charger

as low as \$21.99 (C)

LED Desk Lamp with Wireless Charger

as low as \$23.99 (C)

Case Logic® Wireless Charging Pad

as low as \$29.99 (C)

5W Assure Speaker with Wireless Charger

as low as \$45.99 (C)



NEW

ONEIDA
LON04

Oneida® Pro Series 14 Piece Cutlery Set

Quality Stainless Steel construction. Set includes 8" chef's knife, 8" bread knife, 7" Santoku knife, 5" utility knife, (6) 4.5" steak knives, 3.5" paring knife, kitchen shears, honing steel, and a Hardwood knife block. Hand wash recommended. 25-year limited warranty.

3	12	36	72
214.39	209.54	204.69	194.99 4C

* Pricing subject to change. Please confirm with your sales rep



NEW

ONEIDA
LON01

Oneida® 14 Piece Knife Set with Built-in Sharpener

Quality Stainless Steel Blades. Set includes 8" chef's knife, 8" bread knife, 7" Santoku knife, 5" utility knife, (6) 4.5" steak knives, 3.5" paring knife, kitchen shears, and a wood block with built-in sharpener. Hand wash only. 25-year limited warranty.

3	12	36	72
236.39	231.04	225.69	214.99 4C

* Pricing subject to change. Please confirm with your sales rep



NEW

ONEIDA
LON02

Oneida® Preferred 18 Piece Cutlery Set

Quality Stainless Steel construction with peened texture on comfort handles. Set includes 8" chef's knife, 8" bread knife, 8" carving knife, 7" Santoku knife, 6" chef's knife, 5" utility knife, (6) 4.5" steak knives, 3" paring knife, kitchen shears, honing steel, and a Hardwood knife block. Hand wash recommended. 25-year limited warranty.

3	12	36	72
219.89	214.92	209.94	199.99 4C

* Pricing subject to change. Please confirm with your sales rep



NEW

ONEIDA
LON03

Oneida® Preferred 7 Piece Cutlery Set

Quality Stainless Steel construction with peened texture on comfort handles. Set includes 8" chef's knife, 8" carving knife, 7" Santoku knife, 5" utility knife, 3.5" paring knife, kitchen shears, and a knife block. Hand wash recommended. 25-year limited warranty.

3	12	36	72
112.49	109.37	106.24	99.99 4C

* Pricing subject to change. Please confirm with your sales rep



HAMPTON
Signature

LHF05

Hampton Signature® Orion 14 Piece Cutlery Set

NEW

Quality Stainless Steel construction with mirror polish, gunmetal speckled blades. Satin polished, ergonomically designed handles with black accents. Set includes 8" chef's knife, 8" bread knife, 5.5" Santoku knife, 5" utility knife, (6) 4.5" steak knives, 3.5" paring knife, 3" Bird's Beak knife, and wooden knife block. 25-year limited warranty.

3	12	36	72
166.09	162.07	158.04	149.99 4C

* Pricing subject to change. Please confirm with your sales rep



HAMPTON
FORGE

LHF04

Hampton Forge® Kobe 13 Piece Cutlery Block Set

NEW

Quality Stainless Steel construction with exceptionally sharp, hollow-ground Stainless Steel blade edges and comfort contour designed handles. Set includes 8" slicing knife, 7" Santoku knife, 6" boning knife, 5" utility knife, (6) 4.5" steak knives, 3.5" paring knife, blade sharpener, and a black Pinewood knife block. 25-year limited warranty.

3	12	36	72
107.39	104.29	101.19	94.99 4C

* Pricing subject to change. Please confirm with your sales rep



HAMPTON
Signature

LHF01

Hampton Signature® Continental 15 Piece Block Set

NEW

Quality Stainless Steel full-tang, triple-rivet forged blades with counterbalanced, ergonomic handles. Set includes 8" chef's knife, 8" bread knife, 6" serrated utility knife, 5.5" Santoku knife, (6) 4.5" steak knives, 3.5" paring knife, kitchen shears, blade sharpener, and a natural Rubberwood knife block. 25-year limited warranty.

3	12	36	72
145.69	141.77	137.84	129.99 4C

* Pricing subject to change. Please confirm with your sales rep



HAMPTON
FORGE

LHF02

Hampton Forge® Epicure 15 Piece Cutlery Block Set

NEW

Quality Stainless Steel construction with exceptionally sharp, fine-edge blades. Slip-resistant, soft grip ergonomic handles. Set includes 8" chef's knife, 8" bread knife, 8" slicing knife, 7" Santoku knife, 5.5" Santoku knife, 5" utility knife, (6) 4.5" steak knives, 3.5" paring knife, kitchen shears, and a natural Pinewood knife block. 25-year limited warranty.

3	12	36	72
96.09	93.32	90.54	84.99 4C

* Pricing subject to change. Please confirm with your sales rep

IMPORTANT NOTE: The pricing reflected in this brochure is intended as a REFERENCE TOOL ONLY. Please refer to your sales rep to confirm pricing, decoration methods, product info and PROP 65 info. | SET-UP: TruColor/Laser Engraving: \$60.00(G)/location. RUN CHARGES: TruColor: 1 location (full color) std. imprint area included. Each add'l location: \$0.50(G)/piece. Each add'l square inch beyond std. area \$0.24(G) per piece/location. Laser Engraving: 1st location included. Each add'l location \$1.20(G)/piece.



KS08

Manchurian Ash 6-Piece Steak Knife Slim Case Set

Stainless Steel blades with triple riveted Manchurian Ash handles. Oversized Steakhouse design. Imprint standard on center of case (blade imprint optional).

9	18	36	72	
49.19	47.64	46.09	42.99	4C

* Pricing subject to change. Please confirm with your sales rep



KS58

Niagara Cutlery™ Rosewood 6-Piece Steak Knife Set

Gift set features triple riveted heavy duty steak knives with Rosewood handles and Stainless Steel blades (blade imprint optional).

9	18	36	72	
57.29	55.47	53.64	49.99	4C

* Pricing subject to change. Please confirm with your sales rep



LON06

NEW

Oneida® Jumbo 4 Piece Steak Knife Set

Set features 4 Stainless Steel jumbo steak knives with traditional black handles and double rivets. Dishwasher safe. Packaged in an Oneida® branded gift box. 25-year limited warranty.

6	12	36	72	
84.89	82.42	79.94	74.99	4C

* Pricing subject to change. Please confirm with your sales rep



LON07

NEW

Oneida® Contour 4 Piece Steak Knife Set

Set features 4 Stainless Steel steak knives with sleek, curve designed black accented handles. Dishwasher safe. Packaged in an Oneida® branded gift box. 25-year limited warranty.

6	12	36	72	
68.39	66.29	64.19	59.99	4C

* Pricing subject to change. Please confirm with your sales rep



NCS06C

Niagara Cutlery™ Cherry Rec Cutting Board 16"

Cherry wood cutting board measures 10.5" x 0.75" x 16". Made in North America. Hand wash only. *Image shows board prior to recommended conditioning.

12	25	50	100
57.29	55.47	53.64	49.99 4C

* Pricing subject to change. Please confirm with your sales rep

WN45

NEW

Rechargeable Cordless Corkscrew

Rechargeable corkscrew with attached foil cutter. Includes a Type-C charging cable.

12	25	50	100
32.09	31.07	30.04	27.99 4C

* Pricing subject to change. Please confirm with your sales rep

IMPORTANT NOTE: The pricing reflected in this brochure is intended as a REFERENCE TOOL ONLY. Please refer to your sales rep to confirm pricing, decoration methods, product info and PROP 65 info. | **SET-UP: Laser Engraving:** \$60.00(G)/location. **RUN CHARGES: Laser Engraving:** 1st location included. Each add'l location \$1.20(G)/piece. Please visit website for conditioning & care instructions for the Niagara Cutlery collection.

You might also like

HHB05

NCS01M

NCS02C

HHB01

NCS09



Home Basics® Bamboo Board
10"x15" w/ Handle
as low as \$23.99 (C)

Niagara Cutlery™ Maple Arch
Cutting Board 12"
as low as \$35.99 (C)

Niagara Cutlery™ Cherry Arch
Cutting Board 16"
as low as \$49.99 (C)

Home Basics® Two Tone Bamboo
Cutting Board 8"x12"
as low as \$18.99 (C)

Niagara Cutlery™ Multi Wood
Cutting Board 12"
as low as \$42.99 (C)



KS69 (Set) KS68 (L) KS67 (M)

Woodland Bamboo Cutting Board Set

Crushed Bamboo cutting board set measures 17.75"L x 12"W x 0.563"D (Large) and 13.25"L x 9.5"W x 0.5"D (Medium). Each board includes side hole for carrying or hanging.

	9	18	36	72	
KS69	68.39	66.29	64.19	59.99	4C
KS68	41.29	39.96	38.64	35.99	4C
	12	25	50	100	
KS67	33.29	32.22	31.14	28.99	4C

* Pricing subject to change. Please confirm with your sales rep



KS66 (Set) KS65 (L) KS64 (M)

Grove Bamboo Cutting Board Set

Crushed Bamboo cutting board set measures 15"L x 11.5"W x 0.375"D (Large) and 12"L x 9"W x 0.375"D (Medium). Each board includes angled corner hole for carrying or hanging.

	9	18	36	72	
KS66	45.89	44.42	42.94	39.99	4C
	12	25	50	100	
KS65	34.39	33.29	32.19	29.99	4C
KS64	26.39	25.54	24.69	22.99	4C

* Pricing subject to change. Please confirm with your sales rep



LCI04

Lodge® 10" Square Grill Pan

Pre-seasoned with 100% natural vegetable oil and ready to use. Ribbed cooking surface allows fat and oil to drain from food while searing grill marks onto meats, vegetables, and paninis. Unparalleled heat retention and even heating. Use in the oven, on the stove or grill, and over a campfire. Great for induction cooktops. Interior diameter cooking surface measures 8.75". Made in the USA.

12	25	50	100	
64.99	62.99	60.99	56.99	4C

* Pricing subject to change. Please confirm with your sales rep



LCI03

Lodge® 12" Cast Iron Skillet

Pre-seasoned with 100% natural vegetable oil and ready to use. Unparalleled heat retention and even heating. Use in the oven, on the stove, on the grill, or over a campfire. Great for induction cooktops. Interior diameter cooking surface measures 10". Made in the USA.

12	25	50	100	
70.69	68.52	66.34	61.99	4C

* Pricing subject to change. Please confirm with your sales rep

IMPORTANT NOTE: The pricing reflected in this brochure is intended as a REFERENCE TOOL ONLY. Please refer to your sales rep to confirm pricing, decoration methods, product info and PROP 65 info. | SET-UP: TruColor/Laser Engraving/Digital Laminate Panel: \$60.00(G)/location. Pad Print/Silkscreen: \$60.00(G) color/location. RUN CHARGES: TruColor: 1 location (full color) std. imprint area included. Each add'l location: \$0.50(G)/piece. Each add'l square inch beyond std. area \$0.24(G) per piece/location. Pad Print/Silkscreen: 1st std. color/location included. Each add'l color/location \$0.50(G)/piece. Laser Engraving/Digital Laminate Panel: 1st location included. Each add'l location \$1.20(G)/piece.

You might also like

LCI01

LCI02

LCI21

BBQ28

BBQ25



Lodge® 8" Cast Iron Skillet

Lodge® 10.25" Cast Iron Skillet

Lodge® 2 Qt Cast Iron Dutch Oven

5 Piece BBQ Set (Bamboo) in Roll-Up Case

5 Piece Bamboo BBQ Set

as low as \$39.99 (C)

as low as \$49.99 (C)

as low as \$79.99 (C)

as low as \$39.99 (C)

as low as \$44.99 (C)



HW34

15" Silicone Oven Mitt

Designed with an extra long length (14.75") which makes it ideal for grilling. Heat-resistant silicone exterior with cotton insert. Sold individually, not as a pair.

24	48	96	244
20.59	19.94	19.29	17.99 4C

* Pricing subject to change. Please confirm with your sales rep



BBQ42

Blaze 5 Piece BBQ Set

Elegant metal carrying case with quality corner finishing and hinging. Includes a spatula, tongs, cutting knife, fork and Silicone sauce brush.

12	25	50	100
57.29	55.47	53.64	49.99 4C

* Pricing subject to change. Please confirm with your sales rep



BBQ4

24 Piece Deluxe BBQ Set

Elegant metal carrying case with quality corner finishing and hinging. Set includes Stainless Steel spatula (with built in serrated blade and bottle opener), fork, sauce brush, tongs, cutting knife, grill cleaner, 6 steak knives, 6 forks, 4 BBQ skewers and seasoning shakers.

6	12	36	72
107.99	104.99	101.99	95.99 4C

* Pricing subject to change. Please confirm with your sales rep



BBQ5

5 Piece Deluxe BBQ Set

Elegant metal carrying case with quality corner finishing and hinging. Set includes Stainless Steel spatula (with built in serrated blade and bottle opener), tongs, fork, cutting knife and sauce brush.

6	12	36	72
72.99	70.74	68.49	63.99 4C

* Pricing subject to change. Please confirm with your sales rep



FL161



USB Rechargeable Triple Output LED

800 lumens (high). High powered rechargeable flashlight features a push/pull head for an adjustable beam. 5 modes (high, medium, low, strobe and S.O.S). Includes USB recharging cable and 1 rechargeable battery. (1.375"H x 1.375"W x 6.75"D)

12	25	50	100	
33.29	32.22	31.14	28.99	4C

* Pricing subject to change. Please confirm with your sales rep

IMPORTANT NOTE: The pricing reflected in this brochure is intended as a REFERENCE TOOL ONLY. Please refer to your sales rep to confirm pricing, decoration methods, product info and PROP 65 info. | **SET-UP:** TruColor/Laser Engraving: \$60.00(G)/location. Pad Print: \$60.00(G) color/location, RUN CHARGES: TruColor: 1 location (full color) std. imprint area included. Each add'l location: \$0.50(G)/piece. Each add'l square inch beyond std. area \$0.24(G) per piece/location. Pad Print: 1st std. color/location included. Each add'l color/location \$0.50(G)/piece. Laser Engraving: 1st location included. Each add'l location \$1.20(G)/piece.

You might also like

FL176	FL202	FL192	FL183	UPK41
				
Wave Sensor LED Rechargeable Headlight as low as \$19.99 (C)	Rechargeable 3W COB/UV-A LED Pen Worklight as low as \$19.99 (C)	Rechargeable Slimline Safety COB Worklight as low as \$19.99 (C)	Channel LED / COB Rechargeable Flashlight as low as \$19.99 (C)	Urban Peak® BG344 / FL161 Gift Set as low as \$39.99 (C)



FL205

NEW

Rechargeable **Urban Peak®** 20W Tactical Flashlight

1600 lumens (high). High powered rechargeable flashlight features a push/pull head for an adjustable beam. 5 modes (high, medium, low, strobe and S.O.S). Bulb type: P70 / 20W. Includes 18650 battery & adapter, Type C cable, and hand strap. Packaged in a magnetic gift box. (Flashlight 1.625"H x 1.625"W x 7"D)

12	25	50	100	
38.99	37.74	36.49	33.99	4C

* Pricing subject to change. Please confirm with your sales rep



FL206

NEW

Rechargeable **Urban Peak®** 20W/COB Flashlight

1200 lumens (high). High powered rechargeable flashlight features a push/pull head for an adjustable beam. Front light 20W has 3 modes (high, low, strobe). Side barrel COB has 4 modes: high, low, red, and strobe red. Includes two 18650 batteries, and two plastic battery adapters. (2.375"H x 2.375"W x 10.25"D)

12	25	50	100	
45.89	44.42	42.94	39.99	4C

* Pricing subject to change. Please confirm with your sales rep



FL204

Rechargeable 20W LED Vega Flashlight

2000 lumens (high). High powered rechargeable flashlight features a 20W XHP50 LED bulb. 5 modes (high, medium, low, strobe, S.O.S). Blue LED light indicates battery level. Includes built-in rechargeable battery, Type-C USB charging cable, hand strap, and magnetic giftbox. (6.5"H x 2.25"W x 2.25"D)

12	25	50	100	
40.19	38.89	37.59	34.99	4C

* Pricing subject to change. Please confirm with your sales rep



FL203

Rechargeable 15W LED Faro Flashlight

1200 lumens (high). High powered rechargeable flashlight features a 15W XHP50 LED bulb. 5 modes (high, medium, low, strobe, S.O.S). Blue LED light indicates battery level. Includes built-in rechargeable battery, Micro USB charging cable, hand strap, and magnetic giftbox. (6.625"H x 1.625"W x 1.625"D)

12	25	50	100	
34.39	33.29	32.19	29.99	4C

* Pricing subject to change. Please confirm with your sales rep

BYC11

Nightstick® Dual-Light™ Flashlight - Rechargeable



Rechargeable. 650 lumens (high). 6 modes: (high, medium, low, strobe, flood, Dual-Light™). Glass-filled Nylon Polymer housing with aircraft-grade 6061-T6 Aluminum bezel and Type III hard anodized finish tailcap. IP-X7 waterproof rating. Impact & chemical-resistant. Serialized for personal ID. Limited lifetime warranty. Certifications: CE, BC. Includes a rechargeable Lithium-ion battery, charger, AC & DC power supply, and anti-roll ring. (1.625"H x 1.625"W x 9.5"D)

3	12	36	72
247.45	241.83	236.22	224.99 4E

* Pricing subject to change. Please confirm with your sales rep



NIGHTSTICK
Life Depends on Light™

IMPORTANT NOTE: The pricing reflected in this brochure is intended as a REFERENCE TOOL ONLY. Please refer to your sales rep to confirm pricing, decoration methods, product info and PROP 65 info. | SET-UP: Laser Engraving: \$60.00(G)/location. RUN CHARGES: Laser Engraving: 1st location included. Each add'l location \$1.20(G)/piece.



FL91

Trion Dual Output LED (CREE® XP-E R2 3 Watt)

207 lumens (high). Features a rotary action focus ring and carrying clip. 3 modes (high, low, strobe). Includes 3-AAA batteries. (1.375"H x 1.375"W x 5.25"D)

24	48	96	244
20.59	19.94	19.29	17.99 4C

* Pricing subject to change. Please confirm with your sales rep



FL158

Pulse 5 Watt Dual Output LED (CREE® XP-G2 R5)

250 lumens (high). Constructed of Aluminum. 3 modes (high, low, and strobe). Includes 3-AAA batteries and lanyard hole. (1.5"H x 1.5"W x 5.25"D)

18	36	72	144
24.09	23.32	22.54	20.99 4C

* Pricing subject to change. Please confirm with your sales rep



FL182

5-in-1 Assist Rescue Flashlight (LED / COB)

180 lumens (high). Aluminum body 5-in-1 emergency tool features a seatbelt cutter, window hammer, and 3 flashlight modes (high, low, red flashing). Includes 3-AAA batteries. (1.625"H x 1.625"W x 6.5"D)

36	72	144	250
18.29	17.72	17.14	15.99 4C

* Pricing subject to change. Please confirm with your sales rep



FL185

Pillar Heavy Duty LED Flashlight

2000 lumens (high). Super bright light uses a CREE® XHP50 20W LED bulb. 2 modes (high, low). Twist the head to adjust beam focus. Includes 9-AA batteries. (2.25"H x 2.25"W x 9.5"D)

12	25	50	100
49.19	47.64	46.09	42.99 4C

* Pricing subject to change. Please confirm with your sales rep

FL114

Magnetic LED Worklight

100 lumens (side). 7 position magnetic pivot stand, a pivoting hook, non-slip grip and a 25 lumen flashlight on the top. Includes 3-AA batteries. (8.75"H x 2.25"W x 1.5"D)

24	48	96	244
19.49	18.87	18.24	16.99 4C

* Pricing subject to change. Please confirm with your sales rep



FL167

Magnetic Two Tone Worklight (COB/LED)

200 lumens (side). Worklight has both a built-in clamp and a magnetic base to be secured to a variety of surfaces. Light rotates to 17 different pivot angles and has a 360 degree hideaway hook. Includes 3 AAA batteries. (8.75"H x 1.75"W x 1.25"D)

36	72	144	250
15.99	15.49	14.99	13.99 4C

* Pricing subject to change. Please confirm with your sales rep



IMPORTANT NOTE: The pricing reflected in this brochure is intended as a REFERENCE TOOL ONLY. Please refer to your sales rep to confirm pricing, decoration methods, product info and PROP 65 info. | SET-UP: TruColor/Laser Engraving/Digital Laminate Panel: \$60.00(G)/location. Pad Print: \$60.00(G) color/location. RUN CHARGES: TruColor: 1 location (full color) std. imprint area included. Each add'l location: \$0.50(G)/piece. Each add'l square inch beyond std. area \$0.24(G) per piece/location. Pad Print: 1st std. color/location included. Each add'l color/location \$0.50(G)/piece. Laser Engraving/Digital Laminate Panel: 1st location included. Each add'l location \$1.20(G)/piece.

FL111



Pocket Work Flashlight (10 SMD)

120 lumens. Compact flashlight with magnet clip housed in a lightweight ABS plastic shell. Includes 3-AAA batteries. (1.25"H x 0.75"W x 6.125"D)

50	100	250	500	
10.29	9.97	9.64	8.99	4C

* Pricing subject to change. Please confirm with your sales rep



FL151

Venture Headlamp (CREE® XT-E)

180 lumens (high). Adjustable tilt housing with a CREE® XT-E bulb. Features 3 modes (high, low and strobe). Two red LED bulbs with continuous or flashing modes. Comfortable padded headband and adjustable strap. Includes 3-AAA batteries.

24	48	96	244	
18.29	17.72	17.14	15.99	4C

* Pricing subject to change. Please confirm with your sales rep



You might also like

FL166

FL140

FL194

FL189

FL57



Magnetic Kickstand Worklight (COB)

as low as \$9.99 (C)



3-in-1 Scout Rescue Flashlight (CREE® XPE-R3)

as low as \$17.99 (C)



Rechargeable Pivot Stand 10W Worklight & Powerbank

as low as \$20.99 (C)



Clover Style LED / COB Worklight

as low as \$22.99 (C)



10" Roadside Safety Light

as low as \$22.99 (C)



TS34

Deluxe Household Tool Set

Handy home tool essentials stored in a space-saving tri-fold organizer case. Set includes a fastener kit, 6" diagonal pliers, 6" needle-nose pliers, magnetic driver handle, 6" adjustable wrench, 2 driver bit sets, metric and imperial hex key wrenches, hammer, knife, 8" level, 4 precision screwdrivers, PVC tape and an 8" crimping tool with wire cutter.

12	25	50	100
52.69	51.02	49.34	45.99

* Pricing subject to change. Please confirm with your sales rep



TS45

Rechargeable 3.6V Screwdriver

Set includes a rechargeable 3.6-volt screwdriver, a 24 piece set of 25mm bits, 1 piece 50mm CRV PH1, and 1 piece 60mm bit holder in a plastic storage case. Features include 6Nm (electric) and 10Nm (manual) maximum torque, approx 3-5 hour recharge time, soft grip handle, LED light, and a USB charging cable.

12	25	50	100
45.89	44.42	42.94	39.99

* Pricing subject to change. Please confirm with your sales rep

NEW



TS24

Tool Set with Bi-Fold Carrying Case

Set includes slip joint pliers, utility knife, 4 precision screwdrivers, magnetic bit drive, 2 bit sets, Allen wrench set, claw hammer, scissors, assorted fastener set and a 12 ft tape measure.

12	25	50	100	
42.39	41.04	39.69	36.99	4C

* Pricing subject to change. Please confirm with your sales rep



EL126

Lumina Jump Starter/Power Bank

High-capacity power bank features a dual USB 10,000 mAh Grade A battery capable of boosting car, motorcycle, or recreational vehicle engines. Kit includes jumper cable clamps, micro USB cable, AC adapter, car adapter and user manual.

4	12	36	72	
133.79	130.09	126.39	118.99	4C

* Pricing subject to change. Please confirm with your sales rep



TSB

Tool Set Briefcase

Set includes soft touch needle-nose pliers, slip lock pliers, utility knife, adjustable crescent wrench, hammer, tape measure, scissors, 4 Allen keys, 3 micro screwdrivers, magnetic driver handle, driver bit set and an assortment of plugs, screws and nails.

6	12	36	72	
79.19	76.89	74.59	69.99	4C

* Pricing subject to change. Please confirm with your sales rep



MT1116

MT1116 (16ft) / MT1125 (25ft)

Rugged Measuring Tape

NEW

Durable, high impact casing with Nylon coated tape. Large, easy to read numbers in inches and centimeters. Manual lock, magnetic hook, side clip, and lanyard.

	24	48	96	244	
MT1116	15.99	15.49	14.99	13.99	4C
MT1125	17.19	16.64	16.09	14.99	4C

* Pricing subject to change. Please confirm with your sales rep



WH5

Rustic Wood Handle Knife

Stainless Steel blade with a layered Manchurian Ash handle.
Blade length: 3.5", product when closed: 4.75".

24	48	96	244
19.49	18.87	18.24	16.99 4C

* Pricing subject to change. Please confirm with your sales rep



MK68

Protec Rescue Knife

This single handed opening knife includes a glass breaker tip, seatbelt cutter and pocket clip. Blade and handle are constructed of Stainless Steel with a Black Oxide coating.

24	48	96	244
19.49	18.87	18.24	16.99 4C

* Pricing subject to change. Please confirm with your sales rep

IMPORTANT NOTE: The pricing reflected in this brochure is intended as a REFERENCE TOOL ONLY. Please refer to your sales rep to confirm pricing, decoration methods, product info and PROP 65 info. | **SET-UP:** Laser Engraving: \$60.00(G)/location. **RUN CHARGES:** Laser Engraving: 1st location included. Each add'l location \$1.20(G)/piece. | **GIFT SETS:** Gift Set shown (UPK42) includes the cost of decoration on a single location on each cooler/knife/headlight for a single Set-up of \$60.00(G) with no additional run charges. Inquire for add'l locations. Blankets shown above are sold BLANK - optional Laser/Embroidery decoration available for additional charge. Please visit [ask sales rep](#) for embroidery availability and pricing.

You might also like

MK120

MK92

WH7

MK37

UPK42



Tact Pocket Knife

as low as \$12.99 (C)



Blaze Camo Knife

as low as \$17.99 (C)



Trail Wood Folder

as low as \$18.99 (C)



Industrial Multi Tool

as low as \$23.99 (C)



FL176 / MK56 Gift Set

as low as \$32.99 (C)



PBF56

Micro-mink Sherpa Blanket

Measures 50" x 60" with faux micro-mink (220G/SQM) on one side, and faux lambswool (240G/SQM) on the other. Includes Vinyl bag with rope handle. Green, Orange no longer available.

9	18	36	72	
45.79	44.34	42.89	39.99	4C BLANK

* Pricing subject to change. Please confirm with your sales rep



PBF58

Micro-mink Touch Blanket

Soft, comfortable faux micro-mink blanket measures 50" x 60". Made of 100% Polyester. Includes zipper Vinyl bag with handle.

9	18	36	72	
40.19	38.89	37.59	34.99	4C BLANK

* Pricing subject to change. Please confirm with your sales rep



PBF57

Oversize Micro-mink Sherpa Blanket

Measures 60" x 72" with a faux micro-mink (220G/SQM) on one side, and a faux lambswool (240G/SQM) on the other. Includes a Vinyl bag with rope handle.

6	12	36	72	
68.39	66.29	64.19	59.99	4C BLANK

* Pricing subject to change. Please confirm with your sales rep



UPK36

Urban Peak® CB170 / Blanket Gift Set

Gift set features the Micro-mink Sherpa Blanket (PBF56) paired with the Urban Peak 30 Can Collapsible Cooler (CB170). Decoration included on cooler.

6	12	36	72	
101.79	98.84	95.89	89.99	4C

* Pricing subject to change. Please confirm with your sales rep

